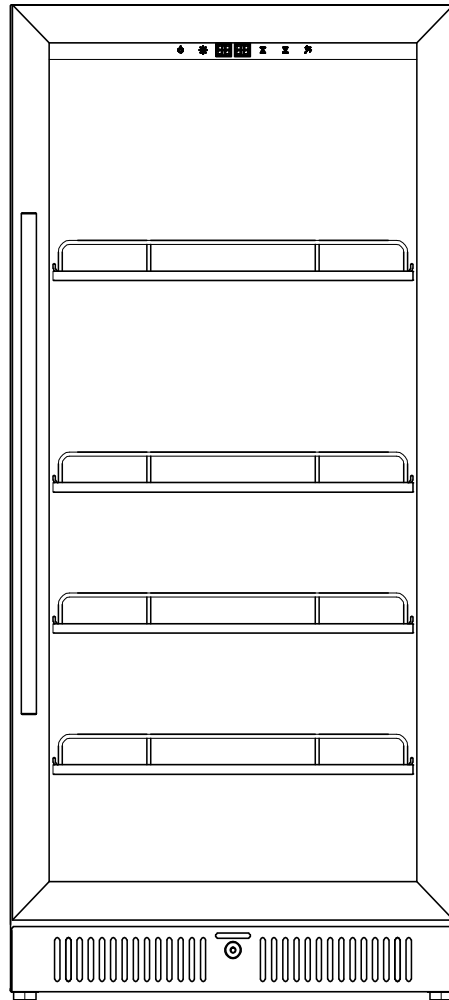


EDGE STAR[®]

Commercial Refrigerator



VBM91SS
VBM101SS
VBM131SS

Owner's Manual

Important Safety Information

Improper handling can cause serious damage to the EdgeStar commercial refrigerator and / or injury to the user. This commercial refrigerator is designed for indoor use only. Any other use may invalidate the warranty. Please review the rating label located inside or on the right exterior panel of the unit for electrical and other technical data related to this unit. The unit must be used in a properly grounded wall outlet.

Please read and follow the safety information listed below to reduce the risk of fire, electric shock, or injury.



Electrical Safety

- Do not exceed the power outlet ratings.
- It is recommended the commercial refrigerator be connected on its own circuit.
- The unit must be installed in accordance with state and local electrical codes.
- A standard electrical supply (115 V, 60Hz), that is properly grounded in accordance with the National Electrical Code and local codes and ordinances is required.
- Use outlets that cannot be turned off by a switch or pull chain.
- Always turn the unit off and unplug it from the outlet when cleaning.
- Unplug the unit if it is not going to be used for an extended period of time.
- Do not operate the unit with a power plug missing the ground plug, a damaged cord, or a loose socket.
- Be sure the commercial refrigerator is properly grounded.
- Avoid installation in high humidity environments such as bathrooms and non-acclimatized basements. Excess moisture may create condensation on the door and impact the performance of the refrigerator.
- Never plug or unplug the unit with wet hands.
- Do not bypass, cut, or remove the grounding plug.
- Do not use extension cords or power strips with this unit. You may need to contact your electrician if it is necessary to use a longer cord or if you do not have a grounded outlet. Do not modify the power cord's length or share the outlet with other appliances.
- Do not start or stop the unit by switching the circuit's power on and off.
- If the power cord is damaged, it must be replaced by the manufacturer or a qualified technician.
- Never repair the unit while it is plugged in.
- Immediately unplug the unit if it makes strange sounds, emits smells, or smoke comes out of it, and contact customer service.
- Do not remove any part of the casing unless instructed to do so by an authorized technician.
- You should never attempt to repair the unit yourself. Contact customer service for service options if the unit needs service.



Disposal: This appliance may not be treated as regular household waste, it should be taken to the appropriate waste collection.

Important Safety Information



General Safety

- To prevent injuries, use at least two people to move and install the commercial refrigerator.
- Install the commercial refrigerator in a well-ventilated area where the ambient temperature is above 50° F and below 90° F.
- The temperature range for this refrigerator is optimized for beverage storage. Perishable food items may require a different storage environment.
- Do not place hot or warm items into the refrigerator before they cool down to room temperature.
- This unit is designed to be installed indoors, and protected from rain, sleet, snow, and / or moisture.
- This unit is not intended to be used by children.
- Children should be supervised to ensure that they do not play with this product.
- Never allow children to crawl inside the refrigerator. If you are disposing of the unit, remove the door.
- Do not use this appliance near flammable gas or combustibles such as gasoline, benzene, or thinner.
- Do not store explosive substances such as aerosol cans with flammable propellant in this appliance.
- Do not place the unit near heat sources such as ovens, grills, or direct sunlight.
- Only use in an upright position on a flat, level surface and provide proper ventilation.
- Do not pinch or kink the power supply line between the unit and cabinet.
- Do not leave any cleaning solutions in the unit.
- Do not use solvent-based cleaning agents or abrasive solutions to clean the unit as they may damage the interior and exterior.
- Do not place any other appliances on top of the unit.
- Do not turn the unit upside down, on its side, or at an angle off level.
- If your model of commercial refrigerator is equipped with a lock, keep the keys away from children.
- Do not move the unit without emptying the contents and securing the door in a closed position.
- This appliance is not intended for use by persons (including children) with reduced physical, sensory, or mental capabilities unless they are given supervision or instruction by a person responsible for their safety.
- This appliance is meant for use in the household or similar settings.
- Keep all ventilation openings clear of obstruction.
- Do not use mechanical devices or other means to accelerate the defrosting process.
- Do not damage the refrigerant circuit.
- Do not use other appliances inside the refrigerator unless recommended by the manufacturer.
- If the power cord is damaged, it must be replaced by the manufacturer, its service agent, or a similarly qualified individual.



DANGER: Risk of child entrapment. Before you throw away your old refrigerator or freezer, take off the doors and leave the shelves in place so that children may not easily climb inside.



Note: Flammable Refrigerant Used! When handling, moving, and using the refrigerator, make sure to avoid either damaging the refrigerant tubing, or increasing the risk of a leak.

Table of Contents

Important Safety Information	2
First-Time Operating Instructions	5
Introduction.....	5
Parts Identification	6
Installation	7
Unpacking the Commercial Refrigerator	7
Types of Installation.....	7
Clearance Requirements.....	8
Electrical Requirements	10
Recommended Grounding Method	10
Leveling the Commercial Refrigerator.....	11
Installing the Sealing Strips	12
Installing the Anti-Tip Brackets	13
Installing the Door Handle	13
Installing and Removing the Shelves	14
Reversing the Door Swing.....	14
Operation.....	16
Installation Checklist Before Operation	16
Using the Temperature Control Panel	16
Normal Sounds.....	17
Temperature Alarm	17
Door Ajar Alarm	17
Defrosting	18
Preparing the Commercial refrigerator for Storage	18
Cleaning and Maintenance.....	18
Troubleshooting.....	19
Specifications	21
EdgeStar Limited Warranty	22

First-Time Operating Instructions

Before use, make sure all packaging labels and materials are removed from the unit. Be sure to keep track of all included parts and pieces before discarding the packaging materials. It is advised that you keep the original box and packaging materials in case you ever need to move or ship the appliance in the future.

Let the unit stand for at least 24 hours before you use it; this allows the cooling components time to settle from transit. The instruction manual should be read before use.

Introduction

Thank you for purchasing this EdgeStar commercial refrigerator. We hope that this purchase will be the beginning of a lasting and rewarding relationship between you and EdgeStar. We will provide the customer support and exemplary products necessary to nurture that relationship.

This manual contains important information regarding the proper installation, use, and maintenance of your commercial refrigerator. Following this manual will ensure that your product will work at its peak performance and efficiency.

Please save the original product packaging in case you need to safely transport your commercial refrigerator.

For Your Records:

Please write down the model number and serial number below for future reference. Both numbers are located on the rating label on the back of your unit and are needed to obtain warranty service. You may also want to staple your receipt to this manual as it is the proof of your purchase, and is also needed for service under your warranty.

Model Number: _____

Serial Number: _____

Date of Purchase: _____

For a more efficient experience, please do the following before contacting customer service:

If you received a damaged product, immediately contact the retailer or dealer who sold the product.

Read and follow this instruction manual carefully to help you install, use, and maintain your commercial refrigerator.

Read the troubleshooting section of this manual. It will help you diagnose and solve common issues.

Visit us on the web at www.edgestar.com to register your product, download product guides, and access additional troubleshooting resources and up-to-date information.

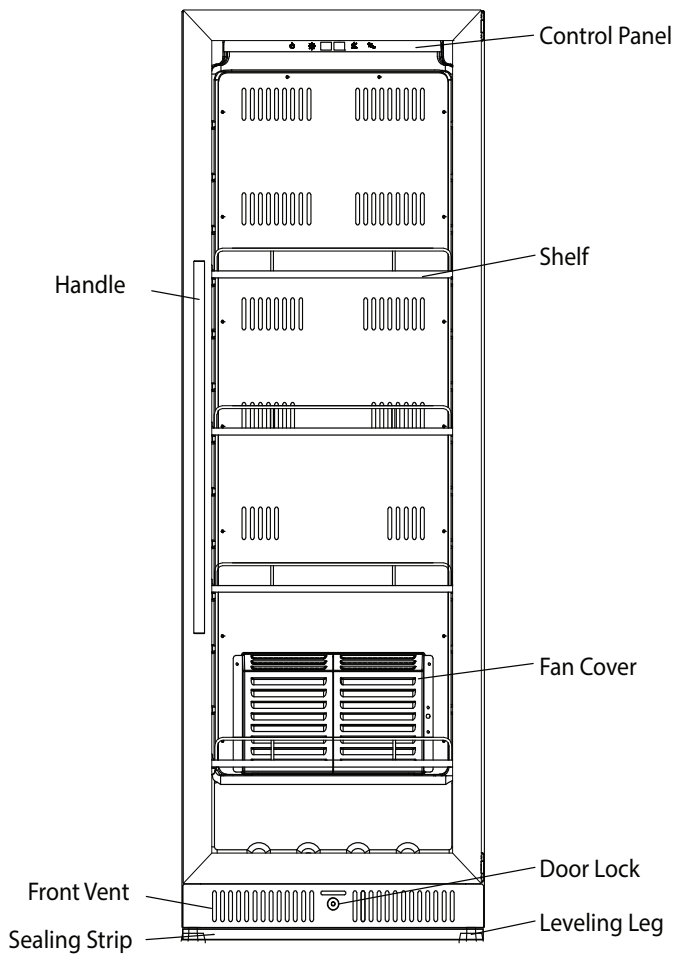
For warranty service, customer service representatives are available at service@edgestar.com.

Parts Identification

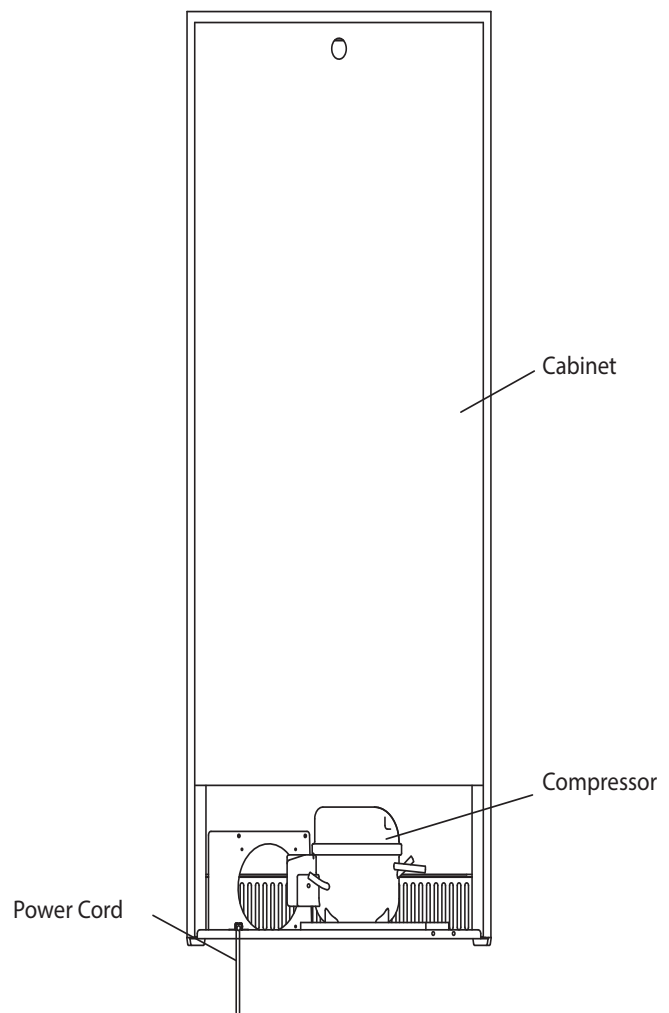


Note: Gather the model and serial number from the product label and write them down before installing the commercial refrigerator.

Front View:



Rear View:



Note: The appearance of each unique model covered by this manual may vary slightly from the above images.

Installation

The commercial refrigerator should be installed in accordance with local electrical code requirements. The commercial refrigerator should also be placed in a location that is strong enough to support its total weight, keeping in mind that it will weigh substantially more when fully loaded than when empty. **Before you plug the commercial refrigerator into a power supply, be sure to let it stand upright for at least 24 hours to allow the compressor's oils to settle.**

Unpacking the Commercial Refrigerator



Warning: Use two or more people to move and install the commercial refrigerator. Failure to do so can result in back or other injury. Carefully remove the packaging materials. Remove any shipping tape and glue from your commercial refrigerator before use. Do not use sharp instruments, rubbing alcohol, flammable fluids, or abrasive cleaners to remove tape or glue. These products can damage the surface of your commercial refrigerator.



Warning: Do not remove any safety, warning, or product information labels from your commercial refrigerator.

Types of Installation

This commercial refrigerator has been designed for freestanding or built-in installation. In each case, there must be adequate ventilation and access for service.

Freestanding Installation:

A freestanding installation will allow you to install the commercial refrigerator in almost any place you desire. You must follow the stated instructions for electrical requirements and leveling the commercial refrigerator.

Built-in Installation:

A recessed installation will allow you to install the commercial refrigerator under a counter or in a kitchen cabinet as long as the required clearance space around the commercial refrigerator is provided. It is necessary to allow adequate ventilation space around the unit, including at the back of the unit.

The following additional items must be observed:

1. Place the commercial refrigerator in front of the installation location. Adjust the feet and place the unit flat on the floor or on a platform depending on your installation requirements.
2. Install the sealing strip if desired.
3. If the electrical outlet is behind the cabinet, plug in the commercial refrigerator.
4. Push the commercial refrigerator into position.



Warning: DO NOT install the commercial refrigerator behind a closed cabinet door.

Clearance Requirements

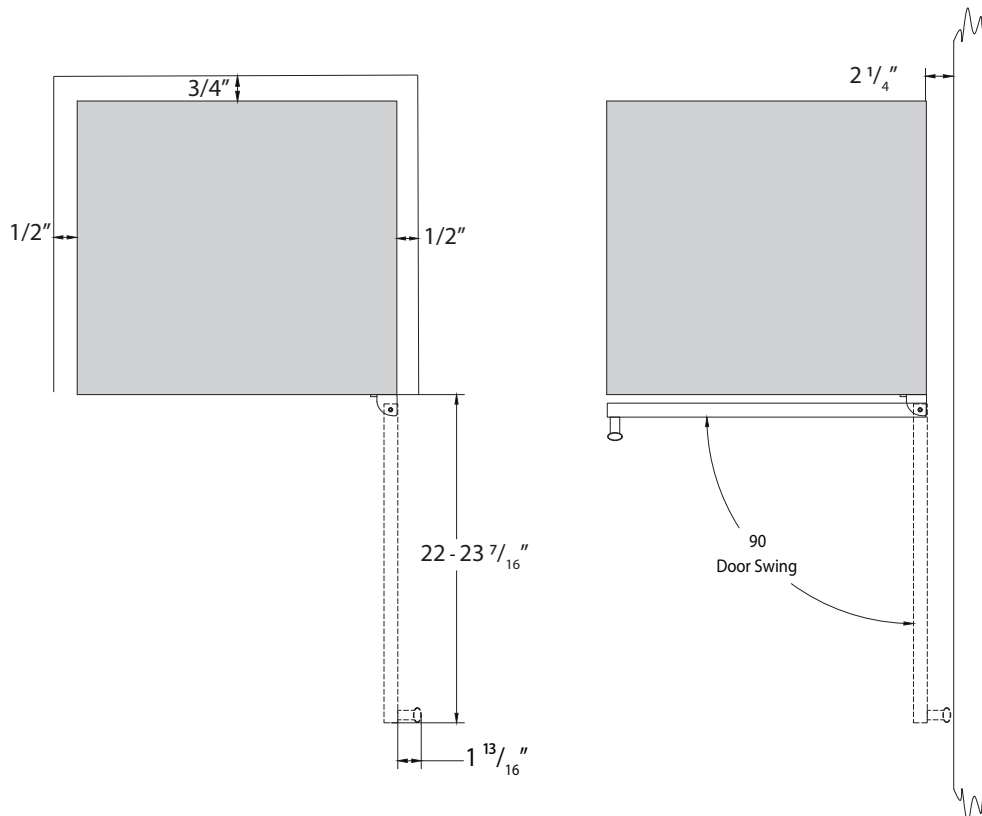
Notes:

- Choose a location that has ambient temperatures above 50° F and below 90° F. Operation outside these temperatures may result in lowered efficiency or cause other adverse effects.
- This unit **MUST** be installed in an area protected from the elements, e.g. wind, rain, water spray or drips.
- The refrigerator should not be located next to ovens, grills, or other heat sources.
- Do not kink or pinch the power supply cord between the commercial refrigerator and the wall or cabinet.

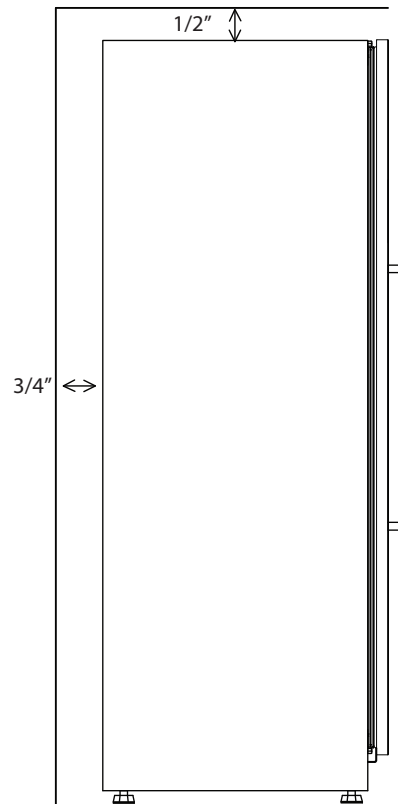
When installing the commercial refrigerator with a built-in installation, follow the recommended spacing dimensions shown.

To ensure proper service access and ventilation, allow at least 3/4" of clearance at the back, 1/2" at the top, and 1/2" at the sides. If the door side is against a wall, allow at least 2 1/4" of clearance. The installation should allow the unit to be pulled forward for servicing, if necessary.

Top View:



Note: The width of the door will vary depending on the model. See specifications section on page 21 for dimensions.

Side View:

Note: The commercial refrigerator should be installed on a firm and level surface that will be able to support the entire weight of a fully loaded unit. It is important for the commercial refrigerator to be level in order to work properly. If needed, you can adjust the height of the commercial refrigerator by rotating the feet. See the “Leveling the Commercial Refrigerator” section.



Note: A standard electrical supply (115 VAC only, 60 Hz), properly grounded in accordance with National Electrical Code and local codes and ordinances, is required.

Electrical Requirements

ELECTRIC SHOCK HAZARD!



- Plug into a grounded 3-prong outlet.
- Never remove the grounding prong from the plug.
- Never use an adapter to bypass the grounding prong.
- DO NOT use an extension cord.
- Failure to follow these instructions can result in fire, electrical shock, or death.

Before you move your Commercial refrigerator into its final location, it is important to make sure you have the proper electrical connection:

A standard electrical supply (115 V, 60Hz), properly grounded in accordance with the National Electrical Code and local codes and ordinances is required.

It is recommended that a separate circuit, serving only your commercial refrigerator, be provided. Use receptacles that cannot be turned off by a switch or pull chain.

The fuse (or circuit breaker) size should be 15 Amps.

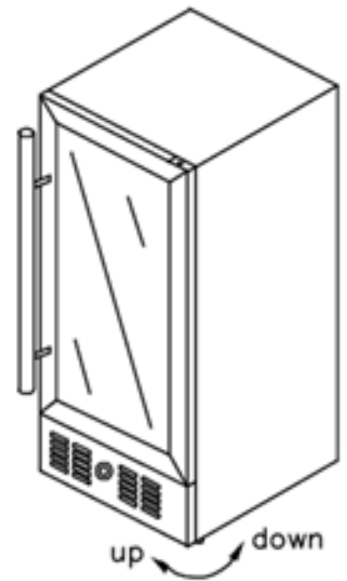
Recommended Grounding Method

For your personal safety, this appliance must be grounded. It is equipped with a power supply cord that has a 3-pronged grounding plug. To minimize possible shock hazard, the cord must be plugged into a mating 3-pronged wall socket and grounded in accordance with the National Electrical Code and local codes and ordinances. If a mating wall socket is not available, it is the personal responsibility of the customer to have a properly grounded, 3-prong wall receptacle installed by a qualified electrician.

Leveling the Commercial Refrigerator

It is important for the commercial refrigerator to be level in order to work properly. It can be raised or lowered by rotating the plastic sheaths around each of the feet on the bottom of the machine. If you find that the surface is not level, rotate the feet until the commercial refrigerator becomes level. You may need to make several adjustments to level it. We recommend using a carpenter's level to check the machine.

1. Place a carpenter's level on top of the product to see if the commercial refrigerator is level from front to back and side to side.
2. Adjust the height of the feet as follows:
Turn the leveling feet to the right to lower that side of the refrigerator.
Turn the leveling feet to the left to raise that side of the refrigerator.



Note: Once you are ready to install the unit in a cabinet or directly on the floor, you must adjust the feet to level the commercial refrigerator.

Installing the Sealing Strips

Four (4) sealing strips have been included with the commercial refrigerator. Two (2) for the front/back, and two (2) for the right/left. Once the sealing strips are fully installed they will create a barrier between the bottom of the commercial refrigerator and the floor that will help prevent dirt, debris, and other contaminants from getting under the refrigerator.

To install the sealing strips:

1. Make sure the leveling legs are properly installed and that the unit is level.
2. Using two or more people, carefully place the commercial refrigerator on its back.
3. Remove a sealing strip from the packaging.
4. Place the sealing strip on the bottom of the unit around the leveling legs.
5. Make sure that the sealing strip is fully installed and flush with the bottom of the refrigerator.
6. Repeat steps 3-5 for the remaining sealing strips.
7. Carefully return the refrigerator to its original upright position.
8. Using a carpenter's level, ensure that the refrigerator is still level.



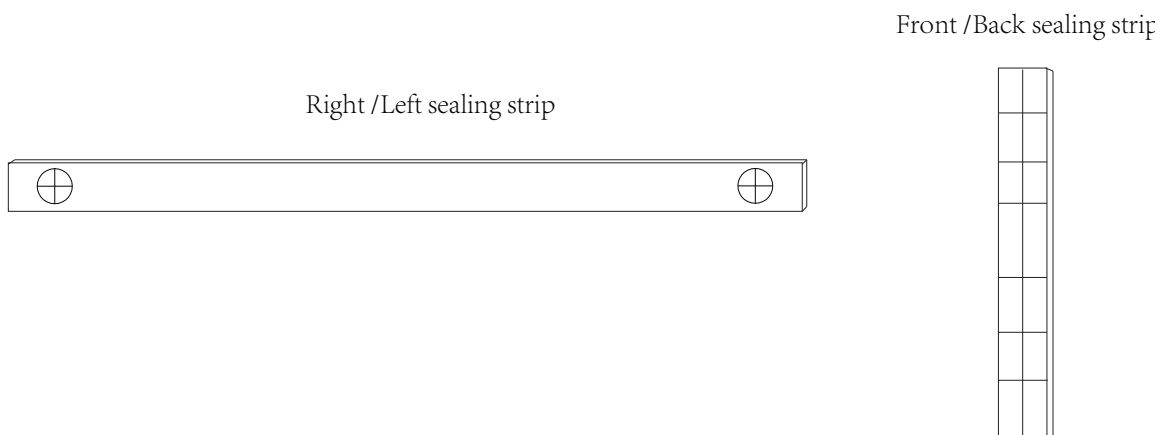
Note: The size of the sealing strips may vary. When installing the sealing strips, please safely remove any excess material, with scissors or a similar cutting tool, so that the sealing strips match the underside of the refrigerator.



Warning: Take care when removing the excess material from the sealing strips. Improper use of a cutting tool can result in injury.



Warning: Use two or more people to move and install the commercial refrigerator. Failure to do so can result in back or other injury.

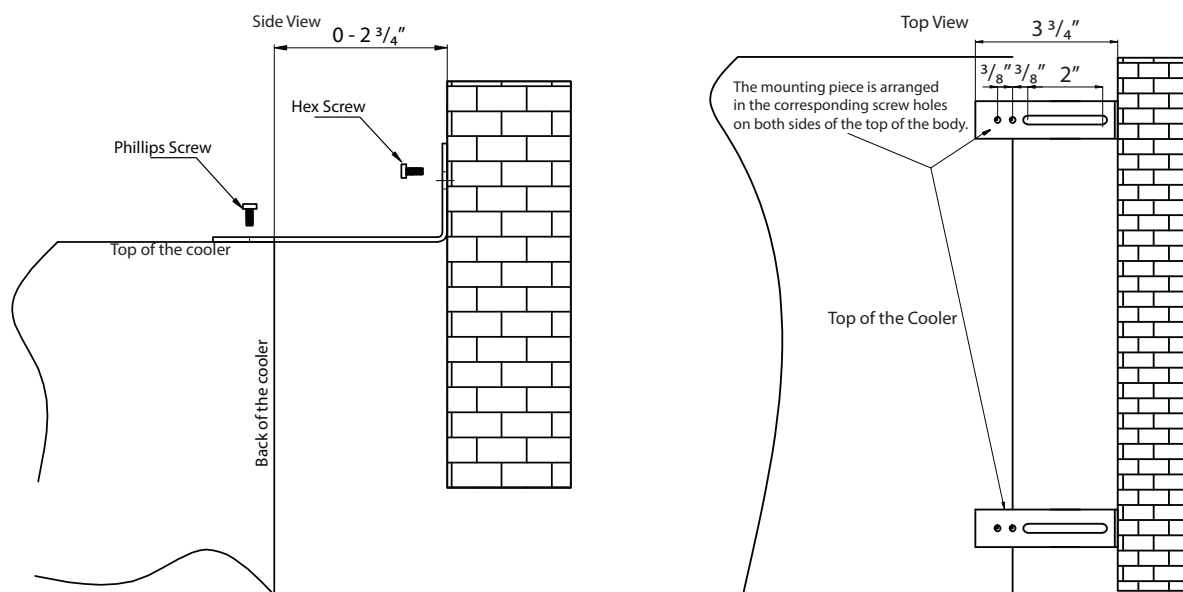


Installing the Anti-Tip Brackets

The refrigerator comes with anti-tip brackets to secure the top of the cooler to the wall behind it. Instructions are provided below for installing the Anti-Tip Brackets.

To install the Anti-Tip Brackets:

1. Determine the distance behind the unit you will want for your installation.
2. Secure the brackets to top of the unit using one (1) provided Phillips screw in each bracket.
3. Secure the brackets to the wall using one (1) provided hexagon screw in each bracket.



Note: The Anti-Tip Brackets are optional and are not a requirement for installation.

Installing the Door Handle

To install the door handle:

1. Open the door and carefully pull the door gasket around the area where the handle is to be installed.
2. Carefully remove the two pre-installed decorative plugs from the front of the door.
3. Insert each Phillips head screw through the gasket side of the door until the screw passes through the door.
4. Align the handle with the screws and tighten using a Phillips head screwdriver until the handle is flush against the door frame.
5. Carefully press the door gasket into its original position.



Note: Some commercial refrigerators do not have decorative plugs installed.



Caution: Do not over-tighten the screws as this may cause damage to the handle or to the stainless steel door.

Installing and Removing the Shelves

To prevent damaging a door gasket, make sure to open the door all the way before pulling the shelves out of their track.

To Install the Shelves:

1. Open the door completely.
2. Place the back of the shelf on the desired shelf track.
3. Slide the shelf into the commercial refrigerator until it reaches the plastic stopper.
4. Press down the plastic stoppers on both sides of the refrigerator simultaneously and slide the shelf past the stoppers.
5. Fully insert the shelf into the unit.

To Remove the Shelves:

1. Open the door completely.
2. If necessary, make sure you remove all the contents on the shelf.
3. Press down the plastic stoppers on both sides of the refrigerator simultaneously and slide the shelf past the stoppers.
4. Continue to pull the shelf forward until it is completely removed from the inner compartment.

Reversing the Door Swing

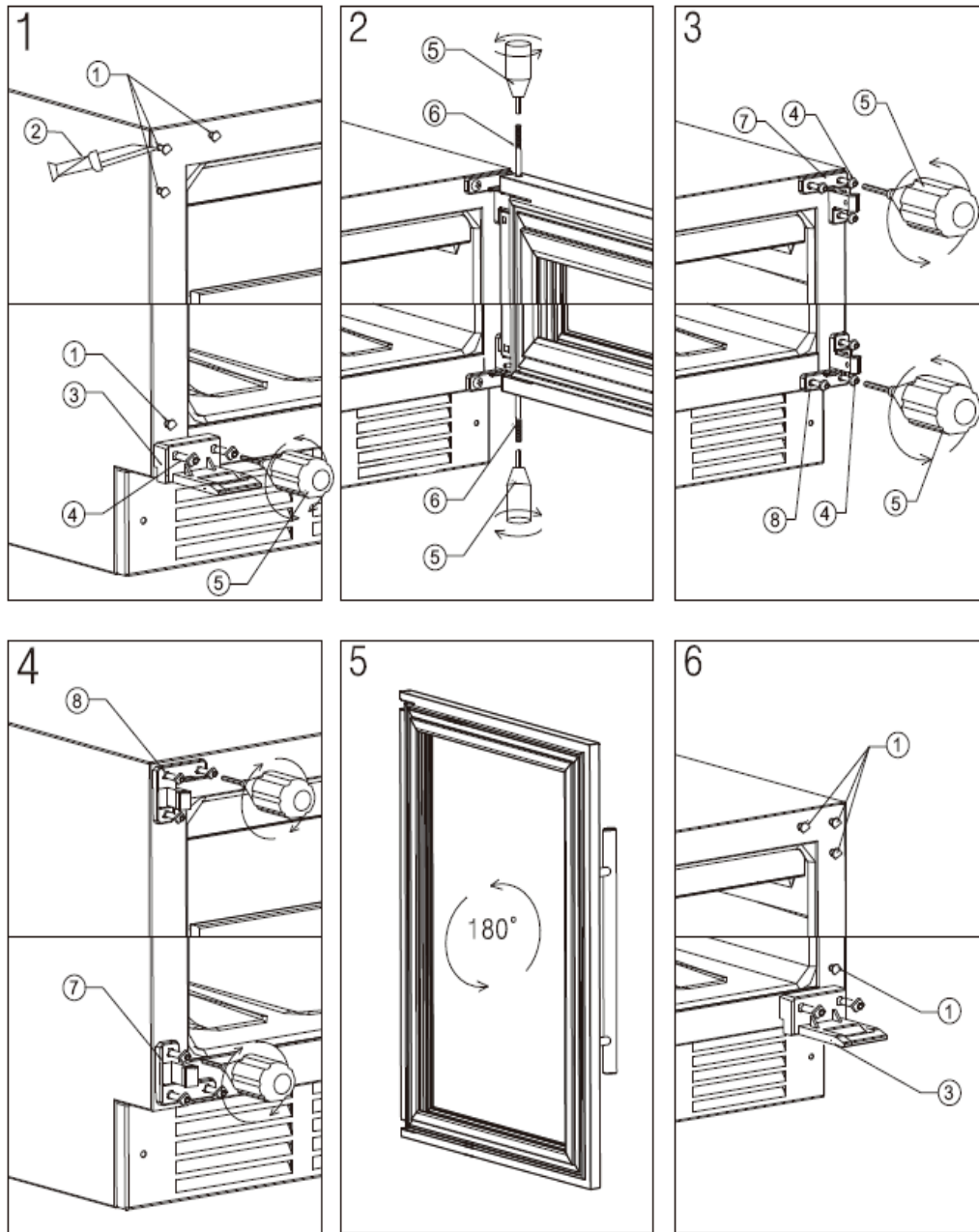


Warning: Before you begin, unplug the Refrigerator.



Warning: Use two or more people to reverse the door swing of the commercial refrigerator. Failure to do so can result in back or other injury.

- 1a. Using a flathead screw driver or flat blade, carefully pry off the decorative plugs on the opposite upper side of the cabinet.
- 1b. Using a M5 hex key (Allen wrench), remove the lower door support from the opposite bottom side of the cabinet.
2. While another person holds the door, use a M5 hex key, remove the door hinge pins from the top and bottom of the door. Using two or more people, remove the door and set aside.
3. Using a M5 hex key, remove the upper and lower door hinge.
4. Install the upper and lower door hinge on the opposite side of the cabinet.
5. Rotate the door 180° and install the door by securing the door hinge pins into the upper and lower door hinge as well as the door.
6. Install the lower door support and decorative plugs on the opposite side of the cabinet.



1. Decorative plug	2. Flat blade	3. Lower door support	4. M5 hex screw
5. M5 hex key	6. Door hinge pin	7. Upper door hinge	8. Lower door hinge

Operation






Installation Checklist Before Operation

1. Have all packing materials and tape been removed from the interior and exterior of the commercial refrigerator?
2. Have the installation instructions been followed, including connecting the machine to electricity? And has proper grounding been installed for the commercial refrigerator?
3. Has the machine been leveled?
4. Is the commercial refrigerator in a site where the ambient temperature is between 50° F and 90° F all year round?
5. Is there a clearance of at least 3/4" at the rear, 1/2" at the top, and 1/2" at the sides for proper air circulation?

Using the Temperature Control Panel



The commercial refrigerator has a temperature range from 34°F to 64°F.

-  **Power Button:** Turns the unit on and off. (Press and hold this button for approximately 3 seconds)
-  **Light Button:** Press the button to turn the inner light on or off.
-  **Up Button:** Press the button on the control panel to increase the temperature by 1°.
-  **Down Button:** Press the button on the control panel to lower the temperature by 1°.
-  **C/F Button:** Press the button on the control panel to alternate both the temperature and temperature type display between Celsius and Fahrenheit.



Note: The commercial refrigerator is equipped with a temperature memory function. If power is suddenly lost, the previously set temperature will be saved and the Refrigerator will return to this setting once power is restored. Allow at least 24 hours before storing your beverages to allow the setting temperature to be reached.



Caution: If you turned the unit off, please wait at least 5 minutes before turning it back on.

Normal Sounds

Your new commercial refrigerator may make noise during normal operation. Most of these sounds are normal. Hard surfaces like the floor and walls can make sounds seem louder than they actually are.

The following describes several sounds you may hear and what may be making them:

- Rattling noises may come from the flow of the refrigerant or the water line. Items stored on top of the commercial refrigerator can also make noises.
- The high efficiency compressor may make a pulsating or high-pitched sound.
- Water running from the evaporator to the water bin may make a splashing sound.
- As each cycle ends, you may hear a gurgling sound due to the refrigerant flowing in your commercial refrigerator.
- You may hear air being forced over the condenser by the condenser fan.

Temperature Alarm

If the interior temperature is higher than 73°F (23°C), “HH” is shown on the temperature control panel and the temperature alarm will sound continuously for one hour. This indicates that the inner temperature is too high. When the interior temperature falls below 73°F (23°C) the alarm will stop automatically. If the inner temperature is lower than 30°F (-1°C), “LL” is shown on the temperature display panel and the temperature alarm will sound continuously for one hour. When the interior temperature rises above 30°F (-1°C) the alarm will stop automatically. If one of these situations occurs please reference the troubleshooting section found in this manual or contact EdgeStar for support.

Door Ajar Alarm

This commercial refrigerator includes a door ajar alarm, which will sound if one of the doors is open for more than three (3) minutes, “00 00” is shown on the temperature control panel and the door ajar alarm will sound continuously for three (3) minutes. Leaving the door open for extended periods of time will cause poor cooling performance and may shorten the life of the Refrigerator. Keep the doors closed as frequently as possible.



Warning:

- Do not touch the power plug when your hands are wet.
- Never unplug the unit by pulling on the plug.

Defrosting

Note that under most refrigerating settings, the unit will automatically defrost in most ambient conditions. However, on colder settings, some frost may build up. Additionally, the more humid the ambient conditions, the more frost may build up. Keep the door closed as much as possible and avoid opening the door unnecessarily to minimize frost build-up. If frost is preventing the door from closing properly, you may need to power the unit off until the frost melts. Use a soft absorbent towel to dry the unit.



Warning: Never attempt to remove frost with a sharp object!

Preparing the Commercial refrigerator for Storage

If the commercial refrigerator will not be used for a long time, or is to be moved to another place, it will be necessary to defrost the unit and dry the interior.

1. Disconnect the Refrigerator from the power supply by removing the power plug from the wall socket.
2. Leave the door open to allow for air circulation and to prevent mold, mildew, and unpleasant smells.



Caution: Store the unit out of reach from children. If you have children, you may want to take precautions such as removing the door to prevent a child from being trapped inside.

Cleaning and Maintenance

Periodic cleaning and proper maintenance will ensure efficiency, top performance, and long life.

Exterior Cleaning

The door and cabinet may be cleaned with a mild detergent or hand soap mixed with warm water. Do not use solvent based or abrasive cleaners. Use a soft sponge and rinse with clean water. Wipe with a soft clean towel to prevent water spotting. If the door panel is stainless steel, it can discolor when exposed to chlorine gas and moisture. Clean stainless steel using a cloth dampened with a mild detergent and warm water solution. Never use an abrasive or caustic cleaning agent.

Interior Cleaning

The commercial refrigerator's interior should be cleaned occasionally.

1. Disconnect power to the unit.
2. Open the door and remove the contents and shelves.
3. Wait until the unit defrosts.
4. With a clean cloth, wipe down the interior of the unit.
5. Reinsert the shelves and items.
6. Reconnect power to the unit.

Troubleshooting

Before Calling for Help:

If the unit appears to be malfunctioning, read through the “Operation” section of this manual first. If the problem persists, check the Troubleshooting Guide below and on the following page. The problem may be something that can easily be solved or explained.

Symptoms	Possible Causes	Solutions
The commercial refrigerator turns on and off frequently.	The room temperature is higher than the recommended ambient environment.	Run the refrigerator at the appropriate ambient temperature.
	The door is being opened too often.	Minimize the number of times the door is opened.
	The door is not completely closed.	Make sure the door is completely closed.
	The door gasket is not sealing properly.	Make sure the door gasket is sealing properly.
	The refrigerator does not have the suggested ventilation.	Read and follow the “Installation Clearance Requirements” section.
The commercial refrigerator does not turn on.	There is a power failure.	Ensure that the refrigerator is plugged in and the power outlet has power.
	The refrigerator is not plugged in.	Plug the unit in to a power outlet that has sufficient amperage.
	A house fuse has blown or the circuit breaker is tripped.	Replace the broken fuse in your fuse box or reset the breaker.
The commercial refrigerator will not reach the desired temperature.	The refrigerator is placed too close to a heat source.	Keep the refrigerator away from direct sunlight or other heat sources.
	The refrigerator does not have sufficient ventilation.	Read and follow the “Installation Clearance Requirements” section.
	The door is opened too frequently or for a long period of time.	Close the door tightly and do not open the door too frequently or for a long period of time.
The commercial refrigerator is making strange noises.	Certain sounds are normal.	Read the “Normal Sounds” section.

Symptoms	Possible Causes	Solutions
The body of the commercial refrigerator is electrified.	The unit is not level or is touching another appliance.	Check to make sure that the refrigerator is level, and that it is not in contact with another appliance or furniture.
	The unit is not grounded properly.	Contact your local electrician to test your electrical grounding system.
Frost is forming in the commercial refrigerator.	The environment is humid.	Though the unit uses an “auto-defrost” system, under certain conditions, manual defrosting may be required. If frost builds up, you can try running the refrigerator on a warmer temperature setting, minimizing the number of times you open the door, or unplugging the unit to allow the frost to melt.
	The ambient temperature is too low.	Ensure that the refrigerator is in a site with an ambient temperature between 50° F and 90° F.
	The door is being opened too frequently.	Try to open the door less frequently or raise the set temperature of the refrigerator.
The door will not shut properly.	The refrigerator is not level.	Make sure the refrigerator is on a level surface.
	The door gasket is dirty.	Clean the door gasket.
	The door gasket is not installed correctly.	Make sure the door gasket is correctly installed.
	The shelves are incorrectly installed.	Install the shelves correctly.

Specifications



Note: Technical data and performance information are provided for reference only. Specifications are subject to change. Check the rating label on the commercial refrigerator for the most accurate information.

Product Type	Commercial refrigerator		
Model	VBM91SS	VBM101SS	VBM131SS
Voltage / Frequency	AC 115V~60Hz		
Amperage	1.4		
Input Power	110-120V		
Color	Stainless Steel Door; White Cabinet		
Refrigerant	R600a		
Temperature Range	34°F - 64°		
Dimensions (Height x Width x Depth)	50 ¹ / ₁₆ " X 23 ⁷ / ₁₆ " X 28 ¹ / ₁₆ "	62 ¹ / ₂ " X 22" X 23 ¹ / ₂ "	67 ³ / ₄ " X 23 ⁷ / ₁₆ " X 28 ¹ / ₁₆ "



Note: Depth shown does not include handle. Handle depth is 1 13/16".

EdgeStar Limited Warranty

Full One-Year Parts and Labor

This product is warranted by EdgeStar and is subject to any conditions set forth as follows:

WHAT IS COVERED:

For a period of ONE (1) YEAR from the date of original retail purchase, EdgeStar will repair or replace any part free of charge including labor that fails due to a defect in materials or workmanship. Labor will be performed free of charge at an authorized EdgeStar repair facility and EdgeStar will supply new, rebuilt, or refurbished parts free of charge. EdgeStar may request a defective part be returned in exchange for the replacement part. All replacement parts or products will be new, remanufactured, or refurbished. All products and parts replaced by EdgeStar under warranty service become the property of EdgeStar. After the 12-month period, EdgeStar will no longer be responsible for labor charges incurred or replacement parts. All defective products and parts covered by this warranty will be repaired or replaced on a mail-in basis to an EdgeStar authorized repair facility.

This warranty applies to the original purchaser only, and only covers defects in workmanship experienced during operation of the product under normal service, maintenance, and usage conditions. This warranty applies to the purchase and use of this product in residential settings within the contiguous United States of America.

Exceptions: Rental Use Warranty

90 days labor and parts from date of original purchase. No other warranty applies.

WHAT IS NOT COVERED- The following limitations apply to the coverage of this warranty. This warranty does not cover:

- Labor charges for installation, setup, or training to use the product.
- Shipping damage, and any damage caused by improper packaging for shipment to an authorized service center, and any damaged caused by improper voltage or any other misuse, including abnormal service, handling, or usage.
- Cosmetic damage such as scratches and dents.
- Normal wear and tear on parts or replacement of parts designed to be replaced, e.g. filters, cartridges, batteries.
- Service trips to deliver, pick-up, or repair, install the product, or to instruct in proper usage of the product.
- Damages or operating problems resulting from misuse, abuse, operation outside environmental specifications, uses contrary to instructions provided in the owner's manual, accidents, acts of God, vermin, fire, flood, improper installation, unauthorized service, maintenance negligence, unauthorized installation or modification, or commercial use.
- Labor, service transportation, and shipping charges for the removal and replacement of defective parts, beyond the initial 12 month period.
- Products that have been modified to perform outside of specifications without the prior written permission of EdgeStar.
- Products lost in shipment, or theft.
- Products sold AS IS or from an unauthorized reseller.
- Products that have had their serial numbers removed, defaced, or with serial numbers that have been invalidated.
- Damage from other than normal household use.
- Replacement or repair of household fuses, circuit breakers, wiring or plumbing.
- Damage to personal property from use of product.
- Damage from service other than from an authorized EdgeStar repair facility.
- Hoses, knobs, lint trays and all attachments, accessories and disposable parts.
- Any service charges not specifically identified as normal such as normal service area or hours.
- Any special or consequential damages arising out of the use of the product.

OBTAINING WARRANTY SERVICE: If you believe your product is defective, contact EdgeStar Customer Support for troubleshooting assistance and warranty service at www.edgestar.com or call 1-866-319-5473. Before contacting Customer Support you are required to have your model number, serial number, and proof of purchase available upon request. Once an EdgeStar authorized representative has confirmed that your product is defective and eligible for warranty service, the product must be returned to an EdgeStar authorized repair facility. EdgeStar is not responsible for damage resulting from shipper mishandling or improper packaging. Do not return a defective product to the place of purchase. Products received without a return authorization number will be refused.

THIS WARRANTY IS IN LIEU OF ANY OTHER WARRANTY, EXPRESS OR IMPLIED, INCLUDING WITHOUT LIMITATION, ANY WARRANTY OF MERCHANTABILITY OR FITNESS FOR A PARTICULAR PURPOSE. TO THE EXTENT ANY IMPLIED WARRANTY IS REQUIRED BY LAW, IT IS LIMITED IN DURATION TO THE EXPRESS WARRANTY PERIOD ABOVE. NEITHER THE MANUFACTURER NOR ITS DISTRIBUTORS SHALL BE LIABLE FOR ANY INCIDENTAL, CONSEQUENTIAL, INDIRECT, SPECIAL, OR PUNITIVE DAMAGES OF ANY NATURE, INCLUDING WITHOUT LIMITATION, LOST REVENUES OR PROFITS, OR ANY OTHER DAMAGE WHETHER BASED IN CONTRACT, TORT, OR OTHERWISE. IN NO EVENT AND UNDER NO CIRCUMSTANCE OF ANY TYPE OR KIND SHALL THE SELLER, MANUFACTURER AND/OR DISTRIBUTOR BE LIABLE FOR ANY REASON, UNDER ANY THEORY, FOR MORE THAN THE BASIC COST OF THE PRODUCT TO THE PURCHASER OR END USER. SOME STATES DO NOT ALLOW THE EXCLUSION OF INCIDENTAL OR CONSEQUENTIAL DAMAGES, SO THE ABOVE EXCLUSION MAY NOT APPLY TO YOU. THIS WARRANTY GIVES YOU SPECIFIC LEGAL RIGHTS. YOU MAY HAVE OTHER RIGHTS THAT VARY FROM STATE TO STATE.

EDGESTAR[®]